

HYDRAULIC BOLT TENSIONING

MWM TCG2020 Engine Tool Set

Engine Manufacturer	MWM
Model	TCG2020
Application(s)	Cylinder Head Studs

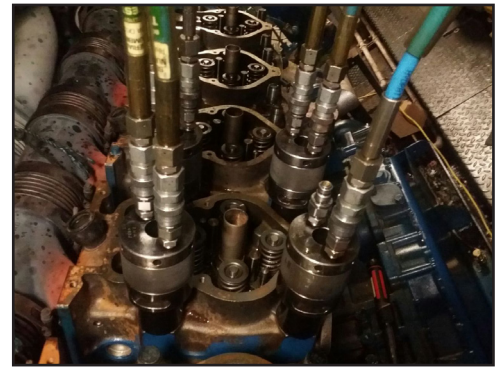
With the Boltight hydraulic tensioning system, engine bolts can be tensioned quickly and accurately. The tools, which are lightweight, durable and simple to use, feature the latest technology and incorporate composite seals that ensure easy piston retraction, long life operation and ease of maintenance. They are designed with an overstroke safety device and maximum stroke indicator for additional safety.

The MWM engine tool set is used to simultaneously tension up to four studs. The compression between the engine components is evenly distributed due to the uniform stud loading. The downtime and risk of engine failure are reduced.

Tools, ancillaries and a full colour health & safety, operating and maintenance manual are supplied in a transportable storage box.

Item	Description	Part Number	Qty.
1	M24 x 1.5 Hydraulic Tensioner	TDF-M024-10-00	4
2	Hand Pump	BT-1514	1
3	1.5m Flexible Hose (C-C)	BT-1541-1.5	3
4	3m Flexible Hose (N-C)	BT-1540-3	1
5	Ø10mm Tommy Bar	BT-TB-10	2
6	Ø6mm Tommy Bar	BT-TB-6	2
7	Manual	-	1
8	Storage Box	MWM-01-TS-BOX	1

Parts List **MWM-01-TS**



Application View



Tool Set Contents



Storage Box



BOLTIGHT®
HYDRAULIC BOLT TENSIONING

BOLTIGHT is the UK Registered Trade Mark of Boltight Limited